



# YEAR 3 CURRICULUM OVERVIEW - AUTUMN TERM

Our whole school theme this term is where we make links to **Local History**.

The questions Year 3 are going to answer are



***How did Britain change from the Stone Age to the Iron Age? How did the Romans impact the history of Lincoln?***

## HISTORY AND GEOGRAPHY

In the autumn term, children will answer an enquiry question in each lesson which is linked to history or geography:

### **How did Britain change from the Stone Age to the Iron Age?**

- What do we already know about life long ago?
- What was life like in the Stone Age?
- What changed in the Bronze Age?
- What was life like in the Iron Age?
- How do we know what life was like in prehistoric times?
- What changed from the Stone Age to the Iron Age?

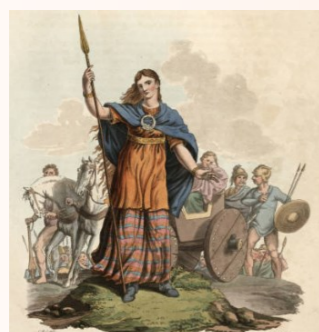
### **How did the Romans impact the history of Lincoln?**

- What was Lincoln like before the Romans came?
- What was the Roman Empire, and how did it grow?
- Where in the world was the Roman Empire at its peak?
- Why did the Romans come to Britain, and why Lincoln?
- What was life like in Roman Lincoln (Lindum Colonia)?
- What did the Romans leave behind in Lincoln?
- What is the legacy of the Romans in Lincoln today?

## COMPUTING

**Computing systems and networks** - Connecting computers

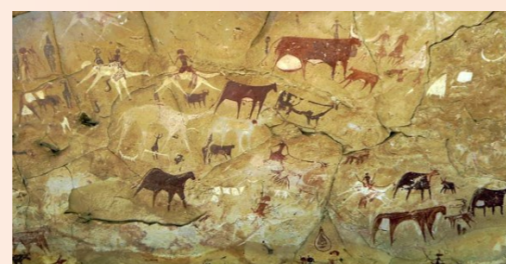
**Creating media** - Stop-frame animation



## MATHS

Topics this term include:

- Place value
- Addition and Subtraction
- Multiplication and Division A



## SCIENCE

Learning will focus on:

- Rocks

## PSHE

**Being Me in My World** Who am I and how do I fit?

**Celebrating Difference** - Respect for similarity and difference. Anti-bullying and being unique.

## ENGLISH

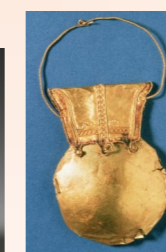
Children will be exploring beautiful books as a stimulus for learning to write:

- historical narratives
- playscripts
- newspaper reports
- persuasive speeches
- poetry
- creative free writing

## ART and DT

**Art - Sculpture** Creating clay coil pots

**DT - Textiles (Structure)** making Roman Bulla



## P.E.

**Real P.E. (Indoors)**

- Co-ordination- send & receive
- Balance – counter with partner
- Gym

**Outdoor P.E.**

- Invasion game - Rugby
- Invasion game - Football



## WORLD VIEWS

**Christianity**

Could Jesus heal people? Did he perform miracles or was there some other explanation?

**Christianity**

Has Christmas lost its true meaning?

## FRENCH

A new start

Calendar and Celebrations

## MUSIC

Glockenspiel 1

I Wanna Play in a Band

## ENRICHMENT

Stone Age artefact loan box

Roman artefact loan box

Clay pots workshop - visit from a local artist

Local Roman walk

Roman soldier visit